

# DATA SHEET



**S4LFT4O10-328**

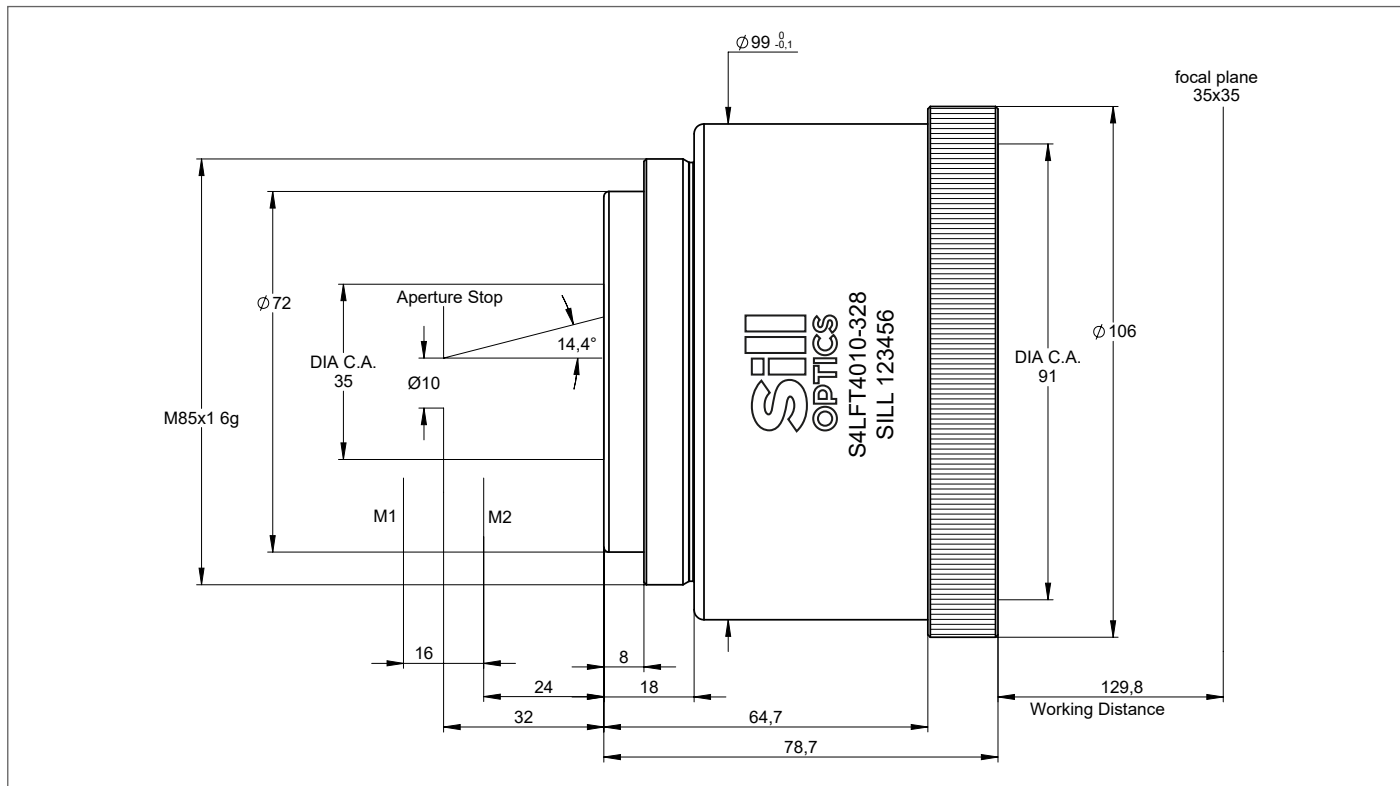
## F-THETA

## TELECENTRIC - FUSED SILICA

1030 - 1090 nm



## OUTLINE DRAWING

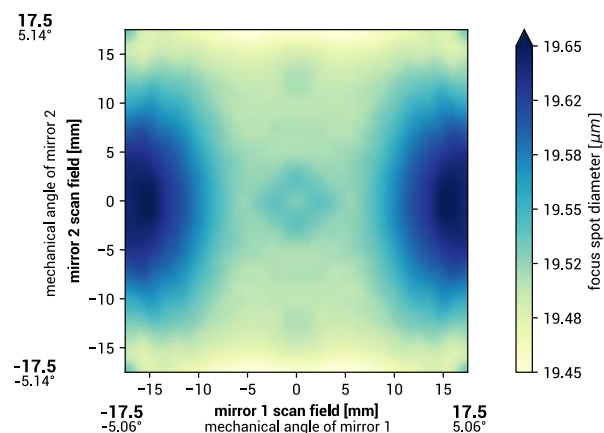


# DATA SHEET

## SPECIFICATIONS

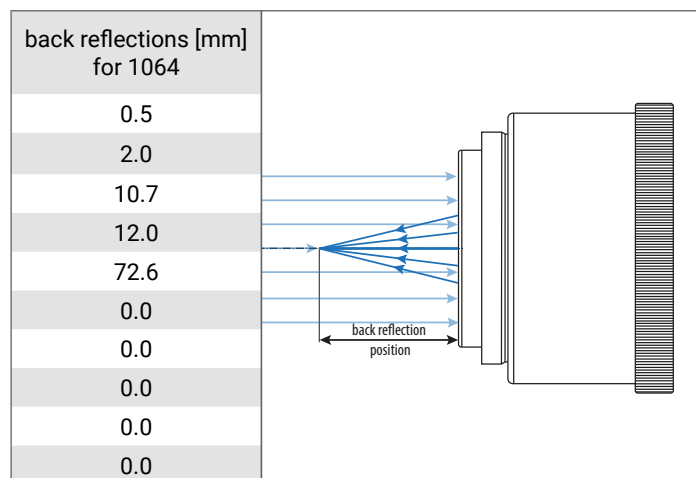
article number	S4LFT4010-328
design wavelength [nm]	1064
effective focal length [mm]	100.3
working distance [mm]	129.8
max. entrance beam-Ø [mm]	10.0
aperture stop distance [mm]	32.0
scan area for a 2 mirror system with mirror distance from lens housing for mirror 2 / mirror 1 [mm x mm]	35 x 35 24.0 / 40.0
max. telecentricity error [°]	1.3
total transmission [%]	> 98
absorption [ppm]	106
lens material	fused silica
LIDT (coating)	5.0 J/cm <sup>2</sup> per 1ns pulse at 50Hz
SP and USP usable	yes
weight [kg]	1.1
cover glass	S4LPG2250-328
cleanliness	not specified

## SPOT



spot diameter at 86.5 % level for a Gaussian beam ( $M^2 = 1$ ) with 10.0 mm diameter at  $1/e^2$ , clipped at 10.0 mm field size and mirror distances as given above for a two mirror scan system

## BACK REFLECTION POSITIONS



## REMARKS

The stated values are based on a vignetting of less than 1 %.

Effective focal length and working distance have a tolerance of +/- 1.5 %.

Absorption tolerance +/- 25 %. Absorption may increase. Correct cleaning establishes original condition.